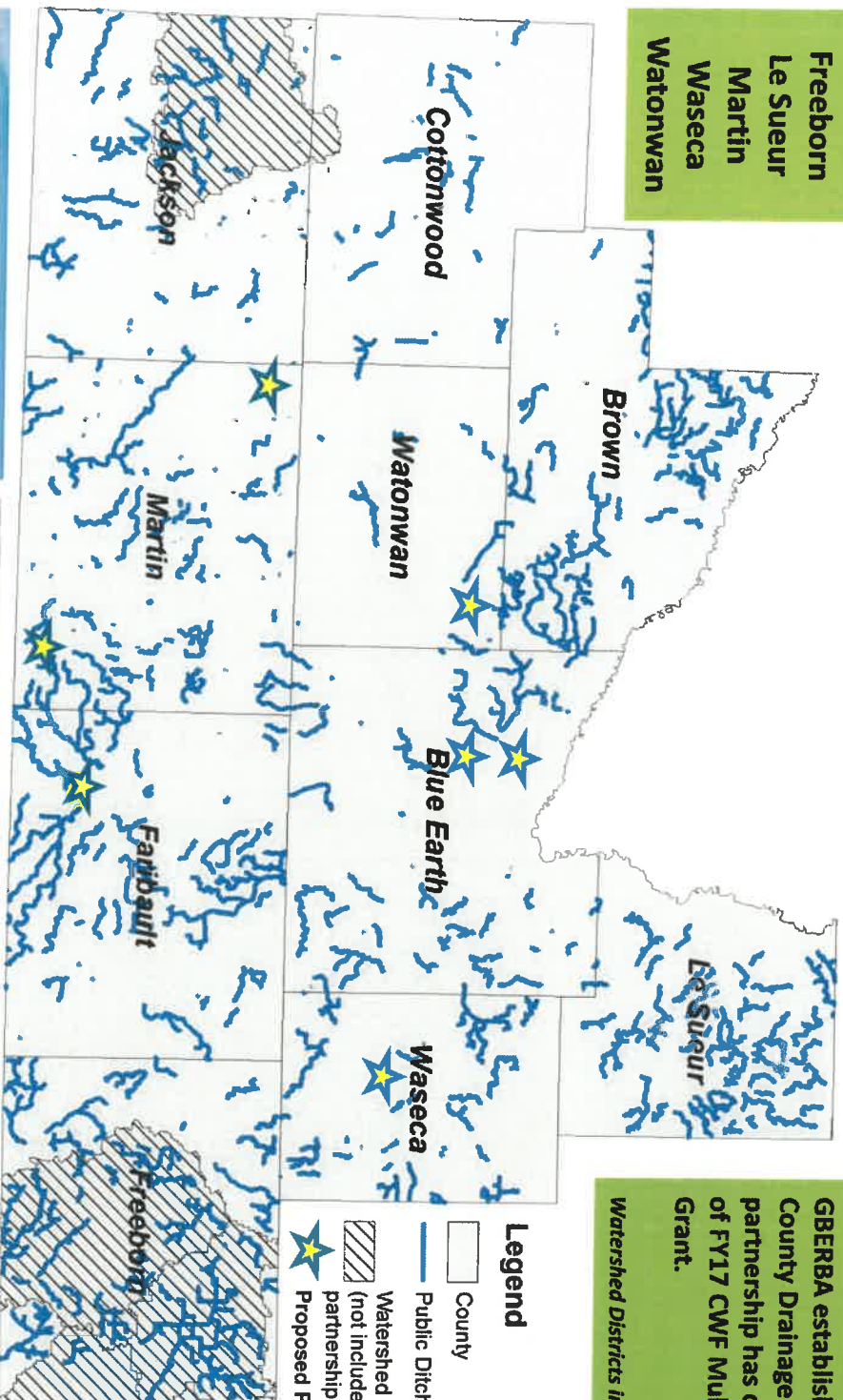




# Multipurpose Drainage Management –

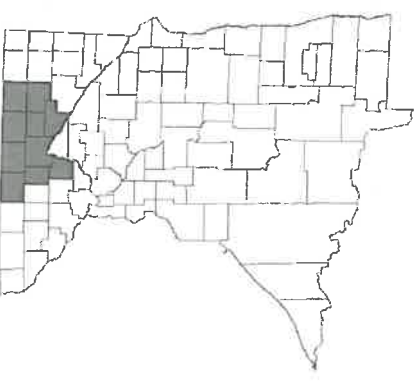
## Greater Blue Earth River Basin Alliance

- Blue Earth
- Brown
- Cottonwood
- Jackson
- Faribault
- Freeborn
- Le Sueur
- Martin
- Waseca
- Watonwan



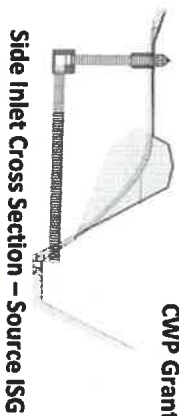
GBERBA established a partnership in 2016 with the 10 County Drainage Authorities in the Basin. This partnership has continued with the implementation of FY17 CWF Multipurpose Drainage Management Grant.

*Watershed Districts in the region will not be included in the grant.*



Conservation Drainage Booklet and Side Inlet Calculator created through a GBERBA MPCA CWP Grant

CONSERVATION & DRAINAGE PROJECTS WORKING TOGETHER - SOLVING PROBLEMS



Commitment by GBERBA partners to continue focusing on Conservation Drainage and the tools needed to create change throughout Minnesota.



# Drinking Water Protection

## Greater Blue Earth River Basin Alliance

Blue Earth  
Brown  
Cottonwood  
Jackson  
Faribault  
Freeborn  
Le Sueur  
Martin  
Waseca  
Watonwan



Abandoned well sealing is a prioritized action in most if not all source water protection plans.

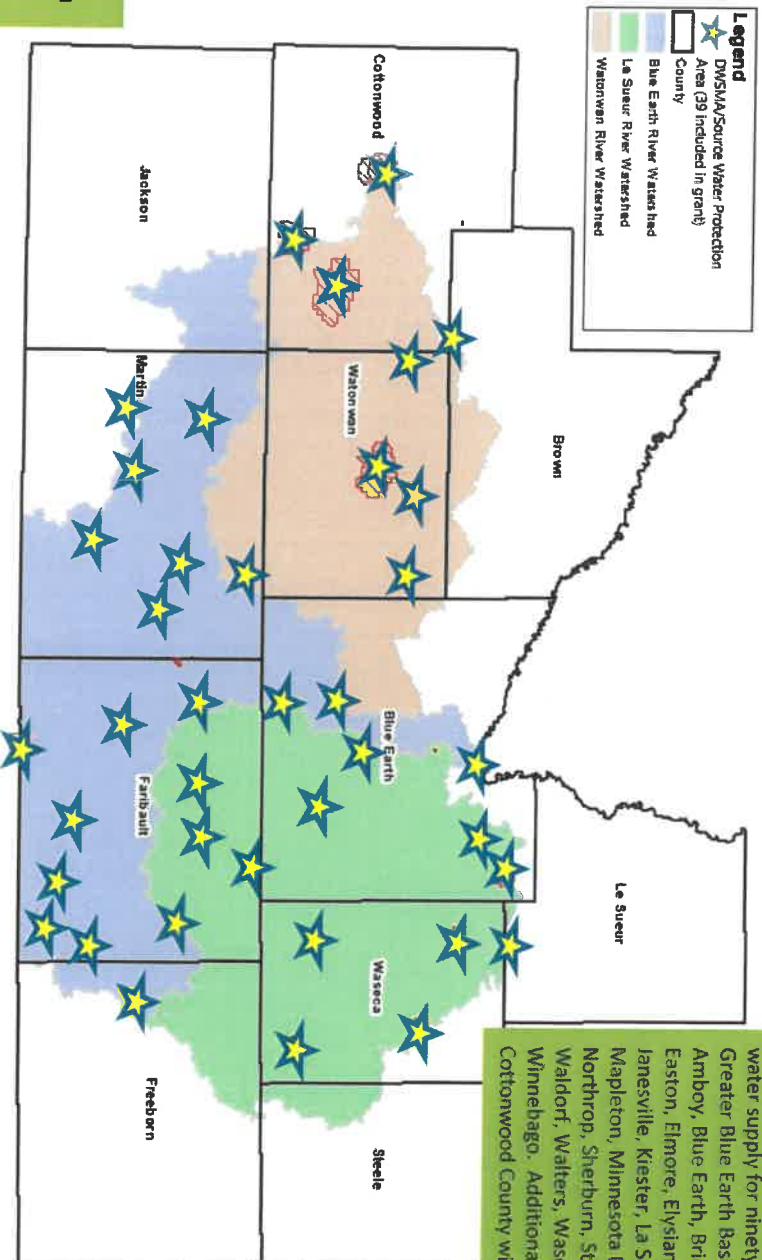
Native tree and prairie plantings funded through this grant will reduce pollutant levels in the project area resulting in cleaner drinking water



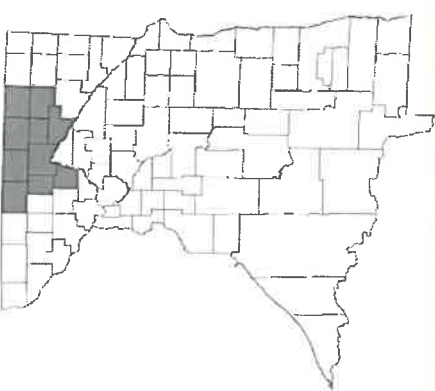
CWF Urban Stormwater Project - Before



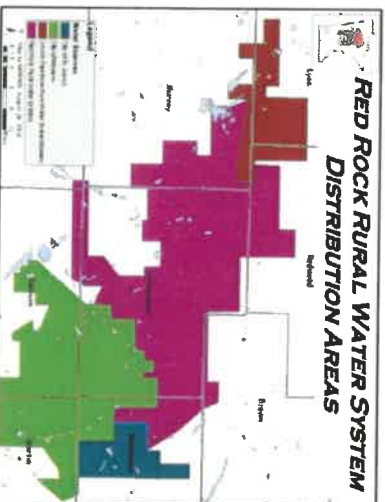
CWF Urban Stormwater Project - After



This grant will have the opportunity to positively impact the drinking water supply for ninety-five percent (95%) of the people in the Greater Blue Earth Basin including the communities of: Alden, Amboy, Blue Earth, Bricelyn, Corfrey, Darfur, Delavan, Eagle Lake, Easton, Elmore, Elysian, Fairmont, Frost, Good Thunder, Granada, Jamesville, Kiester, La Salle, Madelia, Madison Lake, Mankato, Mapleton, Minnesota Lake, Mountain Lake, New Richland, Northrop, Sherburn, St. James, Trimont, Truman, Vernon Center, Waldorf, Walters, Waseca, Welcome, Wells, Windom, and Winnebago. Additionally, the DWSMA for Red Rock Rural Water in Cottonwood County will be included in this grant.



Native prairie plantings in an urban setting.



An opportunity to further protect a crucial drinking water supply for thousands of residents in multiple counties through Red Rock Rural Water System.



Education and outreach will be an important component in this grant.